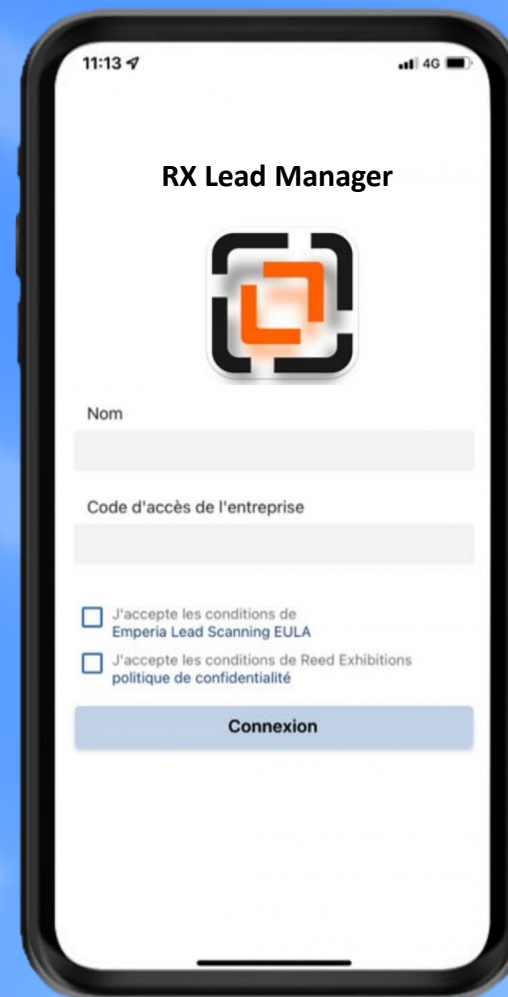


RX LEAD MANAGER

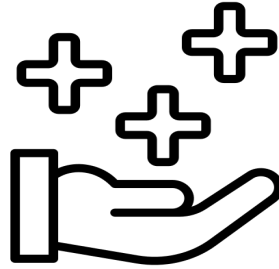
CAPTURE YOUR LEADS
EASILY AND FAST



RX Lead Manager



What is
RX Lead Manager?



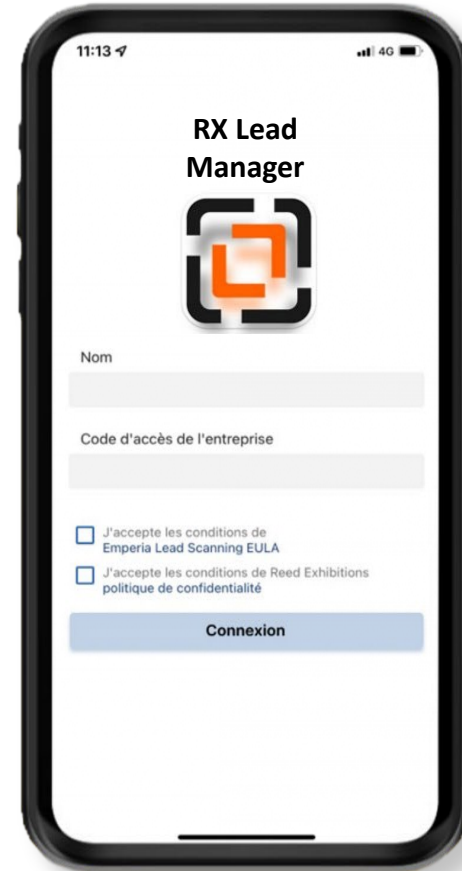
What are the
benefits of
RX Lead
Manager?



How does
RX Lead Manager
work?

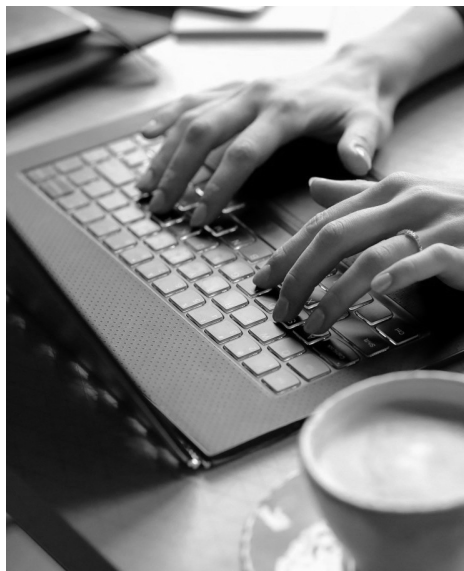
What is RX Lead Manager?

RX Lead Manager is a **mobile application** that allows you to capture, qualify, save & download your leads, streaming your lead capture process to generate high quality leads.



RX Lead Manager

The experience starts in your
Company Hub



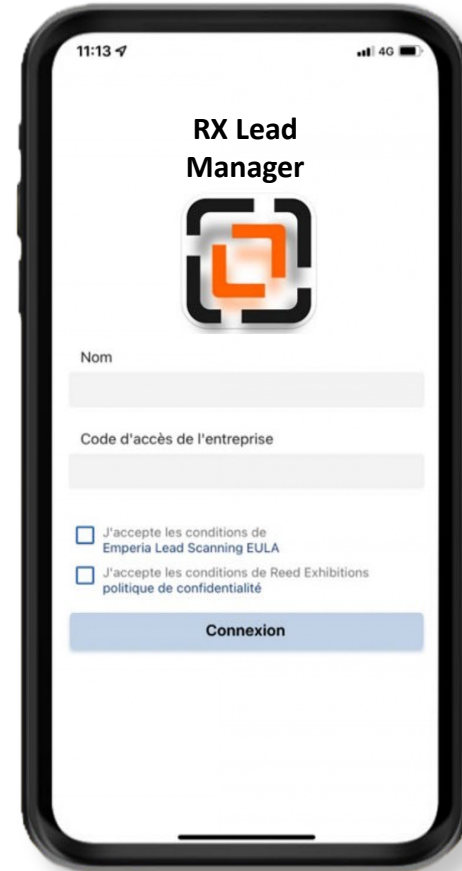
RX Lead Manager **App**
experience at the show



Collect your Lead report in
your **Company Hub**

What are the benefits of RX Lead Manager?

- Unlimited user access for your company
- Enriched database with all Exhibitor profile information
- Custom questions for your leads
- Leads report available anytime during/after the show
- Document sharing with your lead



How does RX Lead Manager work?

1. Find Your Credentials:

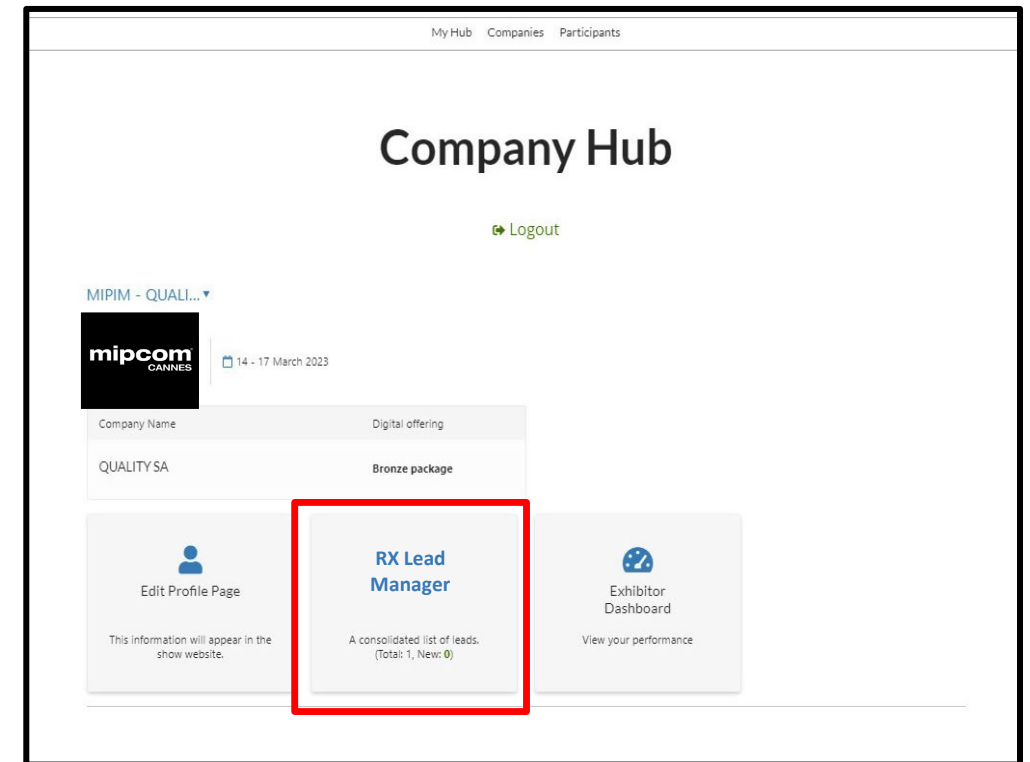
- The company admin can log into the Company Hub.
- Retrieve access credentials through the RX Lead Manager App tile.
- An email with credentials will be sent before the show.

2. Download the App:

- Available on iTunes or Google Play Store.
- Minimum device requirements:
- iOS: Requires iOS 10.3+.
- Android: Requires OS 5.1.1+ and an autofocus camera.

3. Log in to Lead Manager App:

- Use your full name.
- Enter the Company access code provided in the RX Lead Manager App Welcome email and Company Hub.



How does RX Lead Manager work?

On RX Lead Manager Page

The screenshot shows the RX Lead Manager web interface. Annotations point to various features:

- Leads:** Points to the 'DOWNLOAD LEAD REPORT' section, which shows 'Total Leads: 1' and 'New Leads: 0'. Below this are buttons for downloading reports in CSV and XLSX formats.
- Guide To Upload:** Points to the 'GETTING STARTED' section, which includes instructions on how to use the Emperia app to capture leads and links to download the app from the App Store and Google Play.
- Lead Report:** Points to the 'LOGIN DETAILS' section, which explains how to use a company access code to share leads with colleagues.
- Company Access Code:** Points to the 'company access code' field, which contains the code 'QFERBAK7'.

Additional details visible in the interface include:

- DOCUMENT(S) YOU WANT TO SHARE WITH YOUR LEADS:** A section for selecting documents to share with leads, with a red box highlighting the 'Add' button.
- CUSTOM QUESTION(S):** A section for adding custom qualifying questions to the lead capture process, with a red box highlighting the 'Add' button.

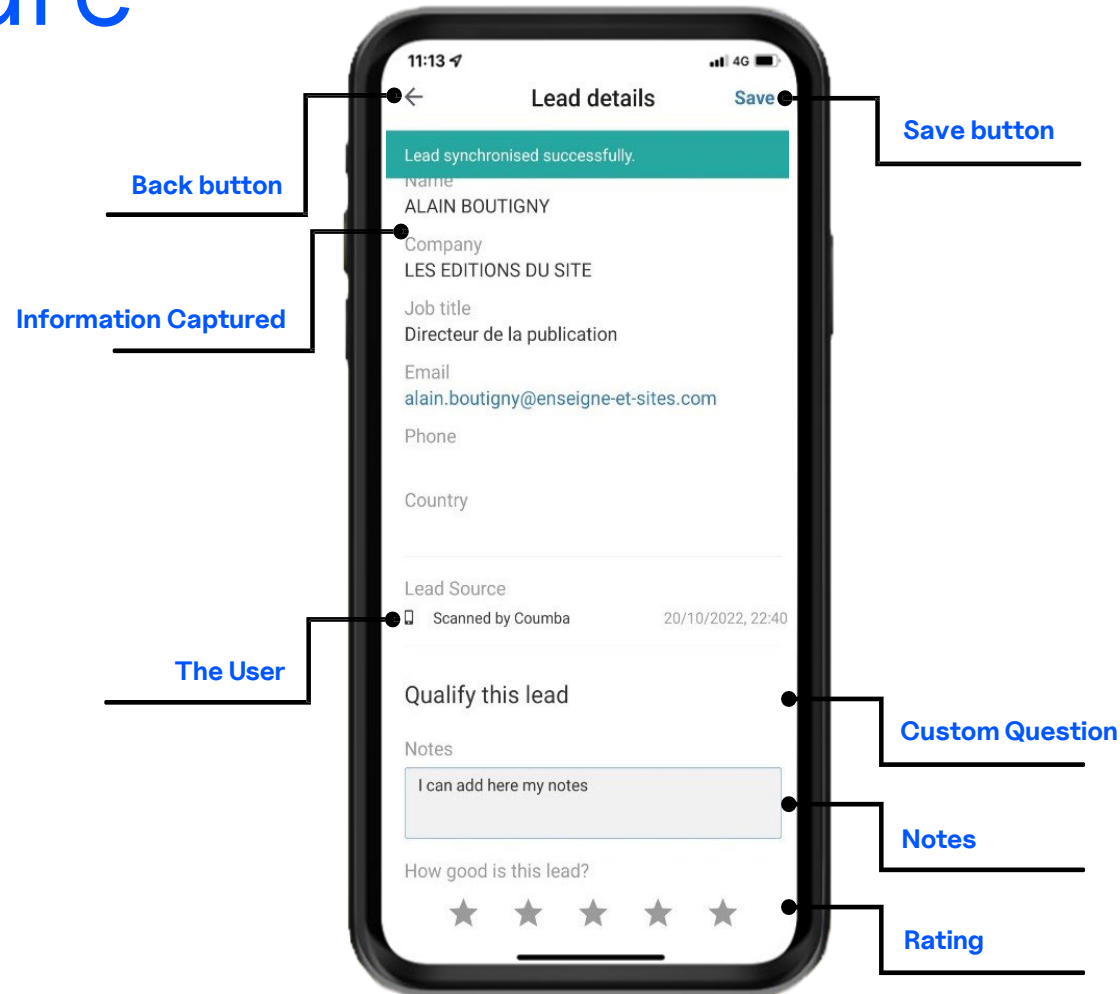
RX Lead Manager

Download the App



RX Lead Manager

Lead Capture



RX Lead Manager Company Hub

[← Back](#)

RX Lead Manager

DOWNLOAD LEAD REPORT
Download your consolidated leads in the format of your choice

Total Leads 1 New Leads 0

Download .CSV

Download .XLSX

GETTING STARTED

Propel by MIPIM NYC is fast approaching. We want to make sure you're prepared for an important part of your experience- collecting leads with the Emperia Lead Retrieval Application. Using the app at the event is easy - simply scan the code on the visitor badge to capture your connection and record their contact details. Here's a simple "Exhibitor's Guide to Emperia" to get you started and answer some commonly asked questions about the Emperia lead scanning tool.

Available on app store and play store

Download on the App Store

GET IT ON Google Play

LOGIN DETAILS

Use these credentials to login to the app. Share this access code with your colleagues from your company so they can capture leads on their own devices as well.

Company access code
QFEBFAK7

✎

DOCUMENT(S) YOU WANT TO SHARE WITH YOUR LEADS

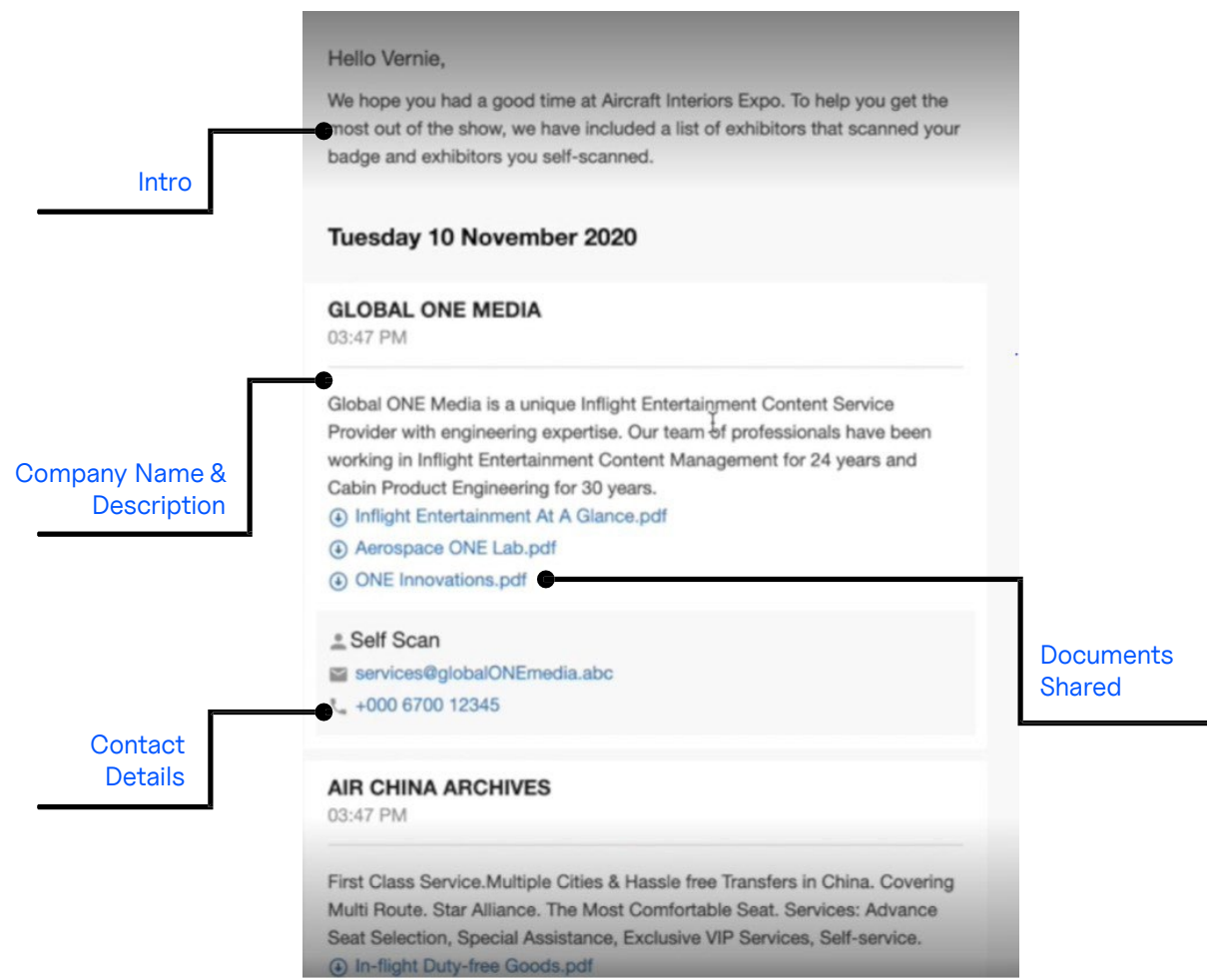
Select up to 3 documents that you want to highlight and share with your leads as part of the end-of-show summary email that the visitors will receive.

Lead Report

First name
Last name
Job function
Company
Name
Email Address
Tel
Activity
Notes
The user

RX Lead Manager Company Hub

Email sent to admins at the end of the show gathering information on all their leads.



NEED ANY ASSISTANCE



Contact our Customer Helpdesk :

- By phone : (+33) 1 47 56 51 00

Our telephone service is open from
Monday to Friday, 9am to 6pm CET.

- By [form](#)
- Read the [FAQ](#)